

Beef / Res

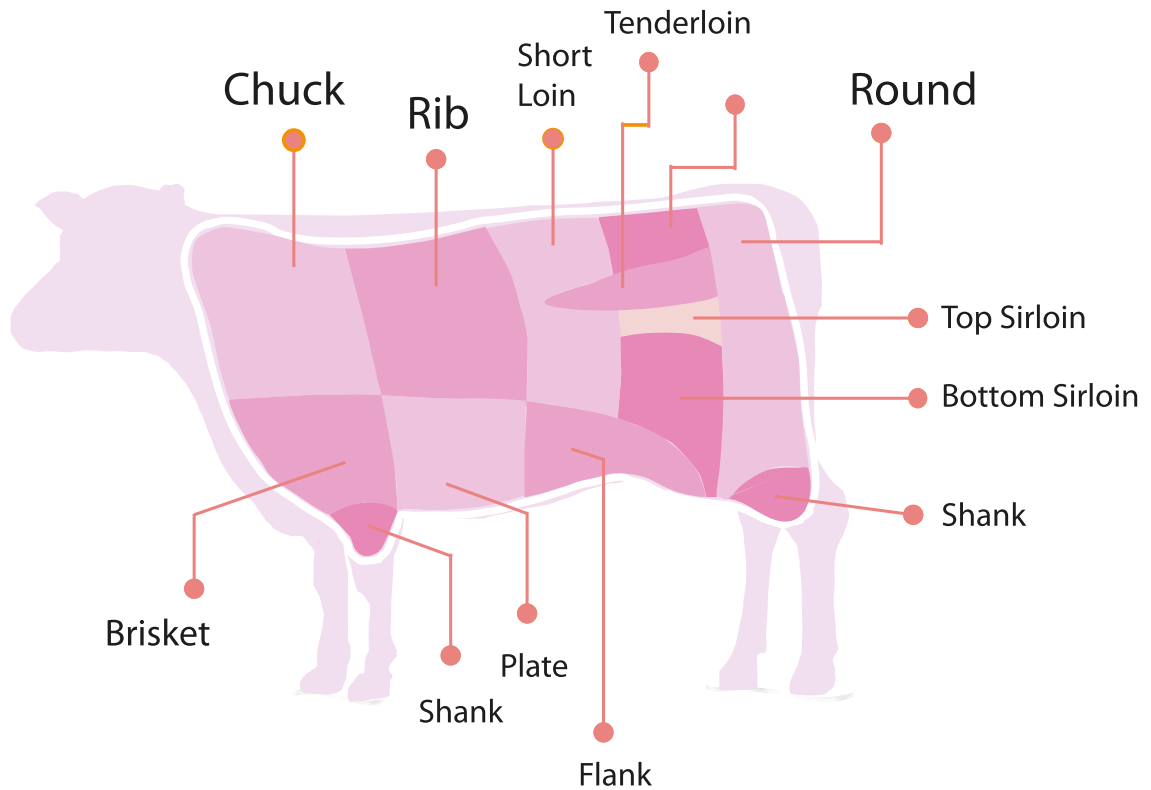
Product Catalogue / Catalogo de producto



INTERNATIONAL
WE BUILD TRUST

Beef / Res

Available Cuts / Cortes disponibles



Beef / Paleta



Neckbones /
Espinazo



Bone in Shank /
Brazuelo



Chuck Roll /
Aguja Rollo de
Diezmillo



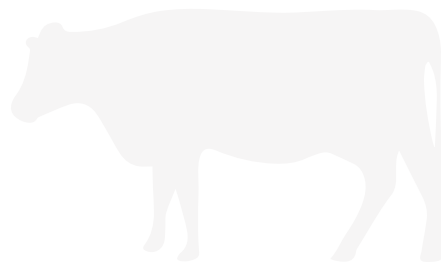
Chuck Clod /
Paleta sin hueso



Chuck Clod XT /
Paleta limpia



Chuck Tender /
Diezmillo



Rounds / Pierna de Res



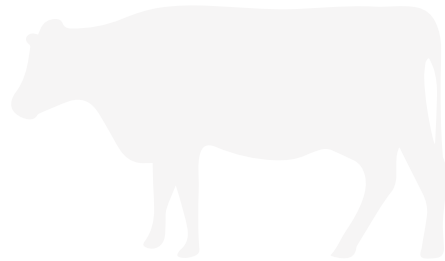
Eye Round /
Pecho Muchacho
Cuete



Peeled Knuckle /
Bola de Pierna



Inside Round /
Pulpa Negra



Loin / Lomo



Top Butt /
Aguayón Superior



Trip Tip /
Colita de Cadera



Culotte Fat On /
Punta de Anca



Ox1 Strip /
Bife Angosto Bife
Chorizo



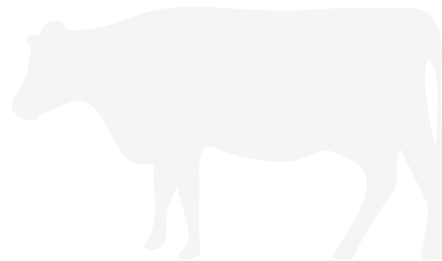
Ox1 Shortloin /
Lomo Corto



UT Tender /
Solomito



Sup PSMO /
Solomito



Rib / Costillas



Lipon Ribeye /
Chuleton



Export Rib /
Costillar



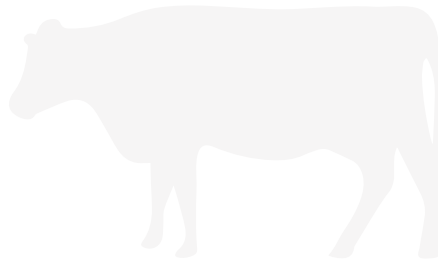
Chuck Short Rib /
Costillas cortas
de Espaldilla



Rib Short Rib /
Costilla Corte



Frz Back Rib /
Costilla



Thim Meats / Cortes delgadas



Flapmeat /
Vacío



Flank Steak /
Falda



Inside Skirt /
Arrachera



Peeled Outside Skirt /
Entraña



Brisket /
Pecho



Grinds / Molidas

Primal Boxed Cut

Grinds

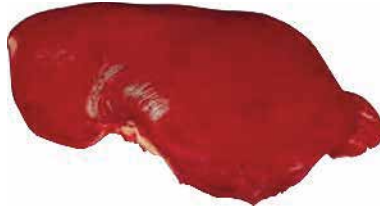
- 73/27
- 81/19
- 90/10
- 93/07



Offals / Otros



Oxtails /
Rabo



Liver /
Hígado



Honeycomb Tripe /
Menudo Mondongo



Check Meat/
Cachete



Tongue /
Lengua



Heart /
Corazón



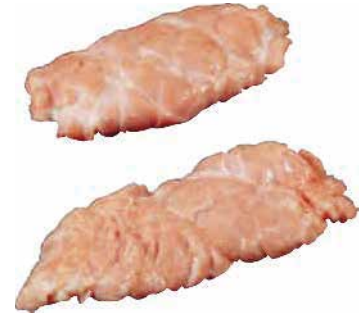
Offals / Otros



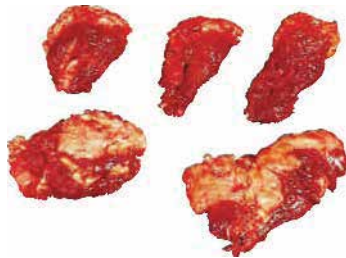
Kidney /
Riñon



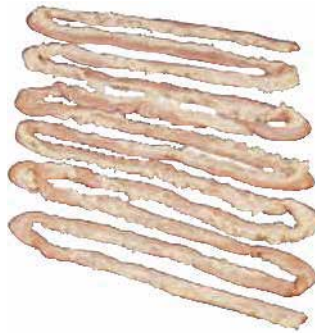
Neckbone /
Espinazo



Sweetbread /
Molleja



Head Meat /
Cabeza



Intestine /
Intestino

